

CERTIFIED LAND CORNER RECORDATION

DESCRIPTION OF CORNER EVIDENCE FOUND, AND ORIGINAL RECORD (if known)

LOCATION No positive evidence of corner monument found. Corner declared obliterated and re-established from fence corner (evidence by occupation) as shown in sketch. Re-established position substantiated by measurements to adjacent monuments.

S. 6 S. 5
S. 7 S. 8

T.15N., R.66W.
6th P.M. G.L.O. record - Sand-Stone 20 x 12 x 5 for cor . . .

(Henry G. Hay, September 1870)

DESCRIPTION OF MONUMENT AND ACCESSORIES ESTABLISHED TO PERPETUATE THE ORIGINAL LOCATION OF THIS CORNER:

At the corner: Set a 5/8" dia. x 24" long rebar with 2" dia. aluminum cap

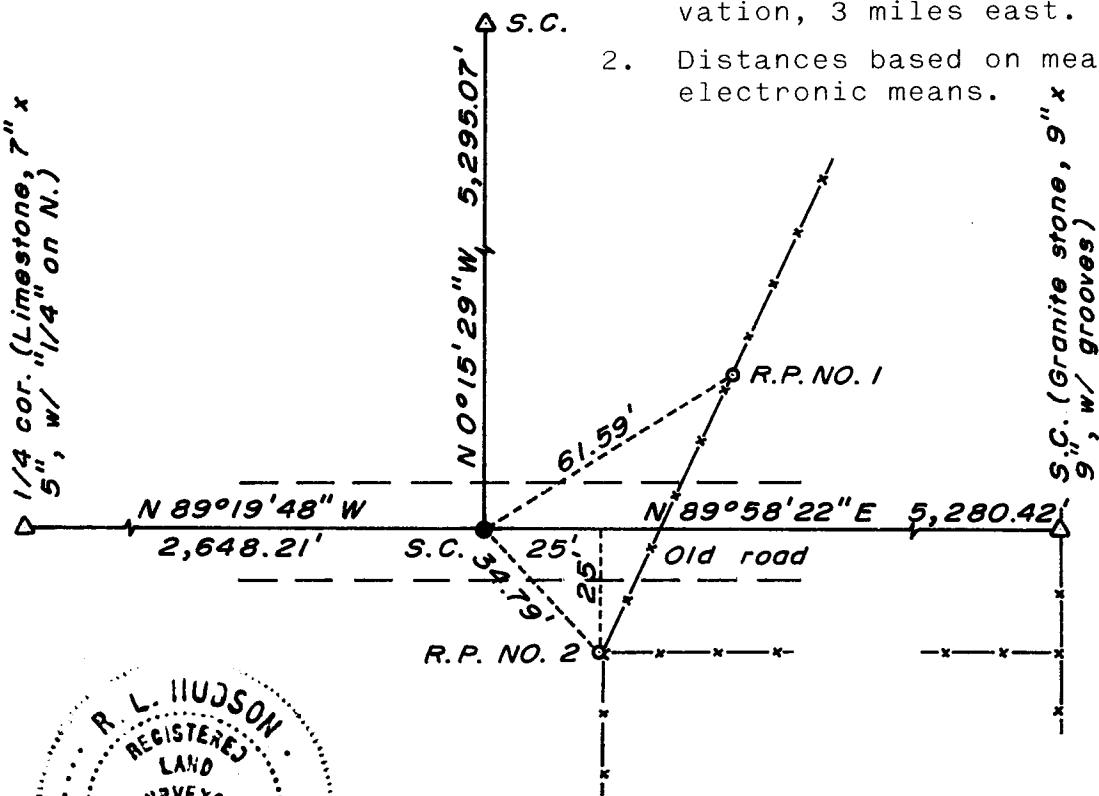
Accessories: A 5/8" dia. x 24" long rebar with 1 1/2" dia. aluminum cap bears N 57° 56' E, 61.59 feet distant (Stamped R.P. NO. 1)

A 5/8" dia. x 24" long rebar with 1 1/2" dia. aluminum cap bears S 43° 22' E, 34.79 feet distant (Stamped R.P. NO. 2)

SKETCH, WITH COURSE AND DISTANCE TO ADJACENT CORNER IF DETERMINED IN THIS SURVEY.

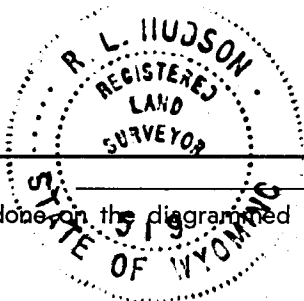
(May Sketch or Paste Reproduction on Reverse Side.)

1. Basis of Bearing - By solar observation, 3 miles east.
2. Distances based on measurements by electronic means.



1" = 40'

Aluminum cap stamped:
T.15N. R.66W.
S.C.
S. 6 S. 5
S. 7 S. 8
LS 519 1978



R.L. Hudson certify that I have carefully performed ~~or reviewed~~ the work done on the diagrammed corner as reported on this recordation form and approve the same.

R.L. Hudson Wyoming L.S. No. 519
Signature of Surveyor Registration No.

STATE OF WYOMING,
Office of Clerk and Recorder,
County of _____

This "corner record" was filed for record on the 6 day of May, 1978, was noted on the cross-index plat and is assigned page No. _____, in book No. _____.

Janet C. Whitehead
County Official

Cross Index No.	T. _____	R. _____	Mer.
	<u>E 5</u>	<u>15</u>	<u>66</u>
	_____	_____	Mer.
	_____	_____	Mer.
	_____	_____	Mer.
	_____	_____	Mer.
	_____	_____	Mer.